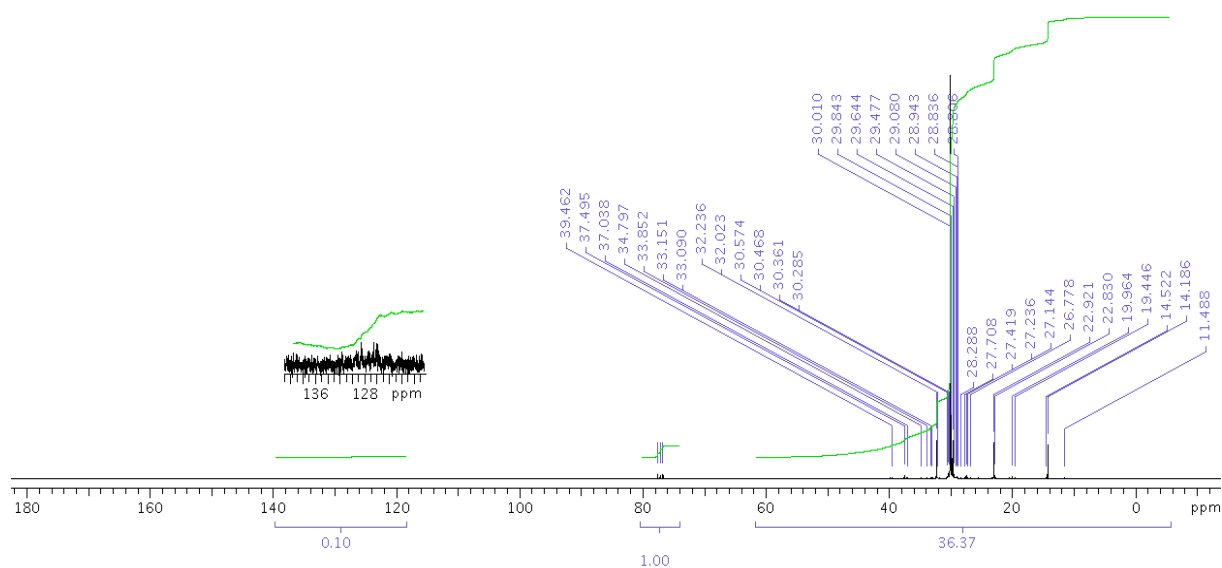


Instrument: Varian Mercury plus 300 NMR spectrometer
Frequency: ¹H – 300 MHz; ¹³C -100 MHz
Solvent: Deuterated Chloroform, CDCl₃
Reference: Deuterated Chloroform (CDCl₃) (¹H chemical shift 2.27 ppm, ¹³C chemical shift 77 ppm)



Chemical shift (PPM relative to CDCl ₃)	Assignment
10-21	Methyl group
14	CH ₃ -CH ₂ -CH ₂ -
22-23	CH ₃ -CH ₂ -CH ₂ -
26-29	Mid chain methylene groups
32	CH ₃ -CH ₂ -CH ₂ -
30-55	Branched carbons
77	CDCl ₃
120-150	Aromatic carbons